

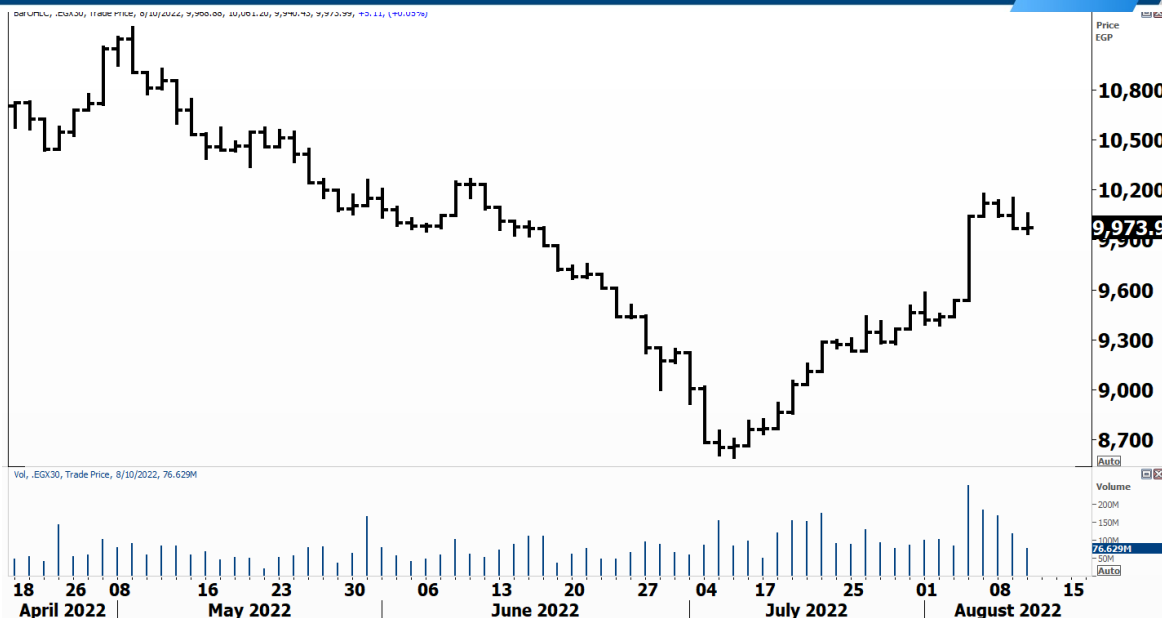


PIONEERSECURITIES

# TECH TO THE POINT

11–August- 2022

This report must be read with the disclaimer  
on the last page



Last	9,965.46
High Today	10,061.20
Low Today	9,940.43
Volume	M 77.823
First Support	9,800
Second Support	9,500
First Resistance	10,170
Second Resistance	10,600
Stop Loss	
HISTORICAL RETURN %	
1 WEEK	4.47%
1 MONTH	13.71%
1 QUARTER	-8.20%
1 YEAR	-8.18%
YTD	-16.60%

## Analysis

The current market action is within range still, we witnessed buying power in the beginning of the session; this buying power, however, was not sustainable.

The 9,800 is our first support to watch as it should halt any potential decline if the market wants to continue a strong rise. Below this level, the 9,500 is important and crucial and even risky if violated. Actually, breaking below 9,800 will probably lead to stronger selling pressure.

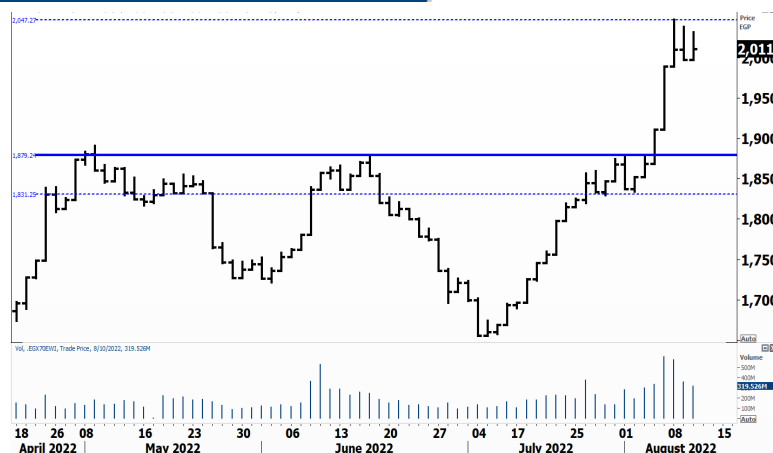
We will not talk, however, about a renewed strong decline before a break below 9,500.

## Small Caps Index/ EGX 70

### Analysis

The EGX 70 index is moving within its range, still above 1,990; short-term investors can place their stop below 1,990. A break below this level will lead to, at least, a short-term decline. If this happens, our target will be set around 1,900.

Thus, position holders can hold and place their stop below this minor support.



## Resistance

**MTIE**

Closed above 2.9 and above 3.11, closing at 3.16. We like the stock and are expecting it to reach 3.6 as a minimum target. We recommend buying dips.

**EGAL**

The breakout above 16.5-16.8 needs to be confirmed today. If EGAL rises from here, it will confirm the breakout and its target will be set around 20.

**CSAG**

Closed at 12.85 after breaking 12.25 to the upside. Those who want to step in should place their stop below 12.15 and use a target at 13.5.

## Support

No stocks broke their support yesterday

## Testing

### Support

**FWRV**

The 3.8 is a level where buyers might appear. A break below it will lead to 3.5. Until now, we can detect a bullish flag being formed, but we need to see FWRV rebounding from above 3.8.

### Resistance

**EKHO**

A break above 1.33 will lead the stock to 1.37. We expect selling pressure to be stronger at the latter level. A break above 1.37 will lead to a strong rise. For now, we recommend to reduce near this level.

Symbol	S. Description	Last	Buying Area 1	Buying Area 2	Selling Area 1	Selling Area 2	Selling Area 3	Stop Loss
--------	----------------	------	---------------	---------------	----------------	----------------	----------------	-----------

*N.B. please note that the levels are too close as these trading opportunities only suit T+0 speculators*

*The prices that are accompanied by a green arrow in the above table show resistance levels. Thus, a break above these levels will pave the way to achieve one (or all) of the targets.*

*The area between buying area 1 and buying area 2 is a trading area.*

#### Yesterday's T+0/T+1 Trades

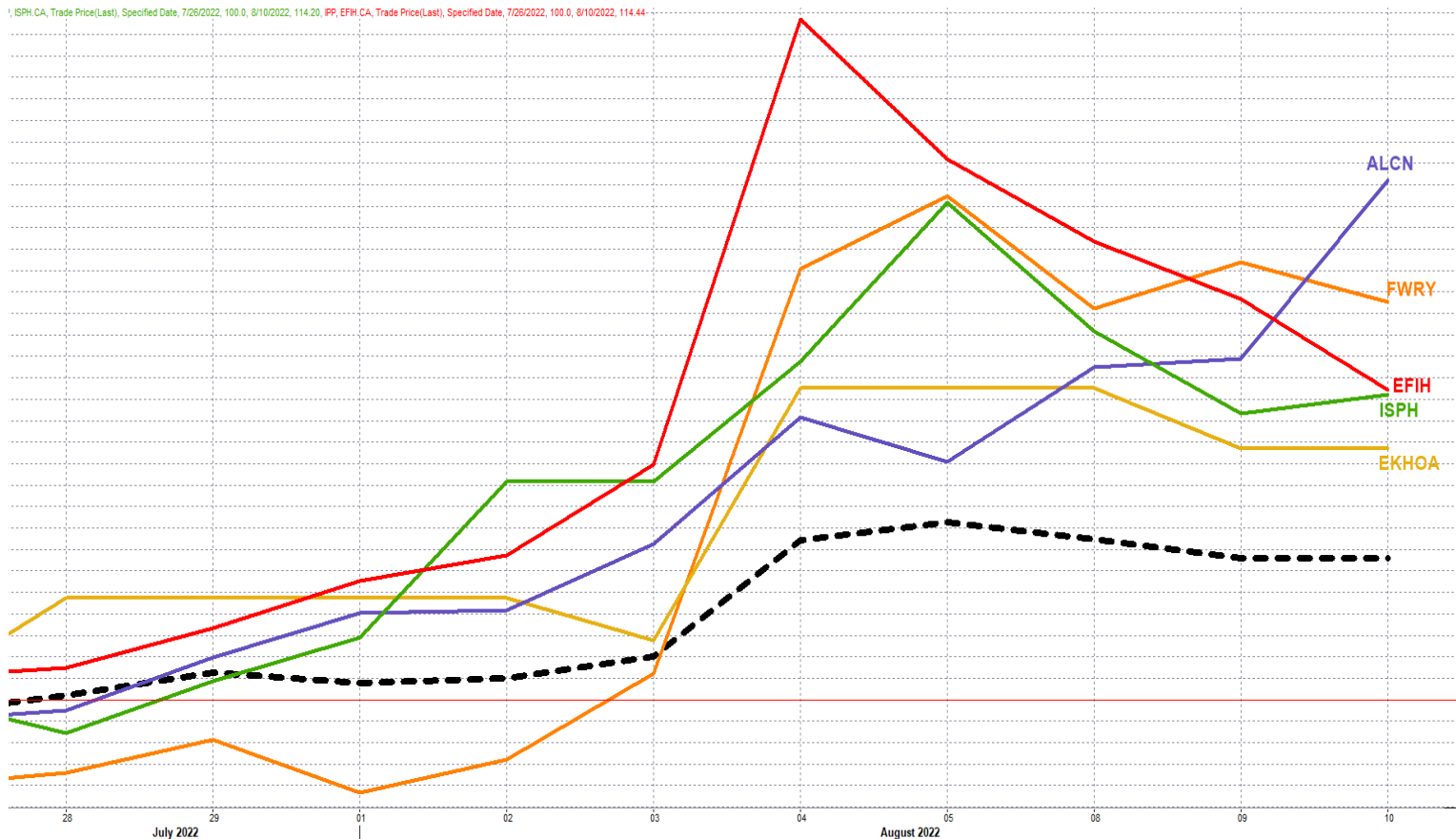


Symbol	Hit first Target	Hit Second Target	Hit Third Target	Hit Stop Loss	Triggered Buy	No Action

#### Top 5 Performers

#### EGX 30 Stocks; Past 2 Weeks

1. ISPH CA, Trade Price(Last), Specified Date, 7/26/2022, 100.0, 8/10/2022, 114.20, PP, EFH CA, Trade Price(Last), Specified Date, 7/26/2022, 100.0, 8/10/2022, 114.44



Symbol	S. Description	Last	Support 1	Support 2	Resistance 1	Resistance 2	Trend	Recommendation	Stop Loss/ Re-Entry
COMI.CA	COM INTL BK/d	38.9	37	35.5	40	42.65	↔	Hold	40
EFIH.CA	E-FINANCE FOR DIGITAL&FINANCIAL INVESTEMENT	15.45	15.4	14.6	18	19.4	↔	Hold	14.6
EAST.CA	EASTERN CO/d	10.1	9.95	9.75	10.28	10.8	↓	P.Sell	10.28
EKHO.CA	EGYPT KUWAIT H/d	1.326	\$1.285	\$1.255	\$1.32*	\$1.35	↔	Hold	1.255
ABUK.CA	ABU QIR FERTILIZERS /d	24.2	23.2	22.5	24.75	25.5	↔	Hold	22.5
HRHO.CA	EFG HERMES HOL/d	12.29	12	11.3	12.8	13.85	↑	Hold	11.3
FWRY.CA	FAWRY FOR BANKING TECHNOLOGY /d	3.84	3.65	3.35	4.2	4.4	↑	Hold	3.35
MFPC.CA	MISR FERTILIZERS PRODUCTION CO	106	103	96	106.9	111	↔	Hold	96
TMGH.CA	TALAT MOSTAFA/d	7.84	7.8	7.5	8.2	9.15	↑	Hold	7.5
EKHOA.CA	EGYPT KUWAIT HOLDING CO	23.89	23.1	22.7	24.6	25.5	↔	Hold	22.7
SWDY.CA	ELSWEDY ELECTR/d	7.19	6.85	6.4	7.5	8.33	↑	Hold	6.4
ETEL.CA	TELECOM EGYPT/d	14.1	13.8	13.2	14.5	14.9	↔	Hold	13.2
CIRA.CA	CAIRO FOR INVESTMENT AND REAL ESTATE	11.5	10.5	10	12	13	↔	Hold	10.5
MNHD.CA	NASR CITY HOUSE/d	2.52	2.45	2.31	2.67	2.82	↔	Hold	2.31
AMOC.CA	ALEXANDRIA MINERAL OILS CO/d	3.91	3.9	3.79	4.07	4.25	↔	Hold	3.79
CIEB.CA	CREDIT AGRICOL/d	5.97	5.7	5.26	6.75	7.15	↑	Hold	5.7
HDBK.CA	HOUSING AND DEVELOPMENT BANK	36	35	33.5	37.5	39	↔	Hold	33.5
CLHO.CA	CLEOPATRA HOSPITAL	4.07	4	3.7	4.4	4.7	↔	Hold	4.4
SKPC.CA	SIDI KERIR PET/d	7.3	7.05	6.7	7.7	8.3	↔	Hold	7.05
ESRS.CA	EZZ STEEL/d	12.76	12.2	11.7	13.35	14	↔	Hold	11.7
JUFO.CA	JUHAYNA FOOD INDUSTRIES	7.23	6.9	6.83	8	8.6	↔	Hold	6.83
HELI.CA	HELIOPOLIS/d	5.73	5.6	5.2	5.91	6.3	↔	Hold	5.2
QNBA.CA	QATAR NATIONAL BANK ALAHLI	15.86	14.7	13.3	16	16.8	↔	Hold	13.3
ALCN.CA	ALEXANDRIA CONTAINER AND CARGO HANDLING	10.1	9	8.26	10.5	11	↑	Hold	8.26
ORAS.CA	ORASCOM CONSTRUCTION	62	58	55	64	66	↔	Hold	55
CCAP.CA	CITADEL CAPITA/d	1.197	1.187	1.152	1.3	1.37	↔	Hold	1.152
RMDA.CA	TENTH OF RAMADAN FOR PHARMACEUTICAL	2.57	2.5	2.39	2.7	2.93	↑	Hold	2.39
PHDC.CA	PALM HILL DEV /d	1.35	1.3	1.21	1.41	1.47	↔	Hold	1.21
ORWE.CA	ORIENTAL WEAVERS /d	6.9	6.85	6.65	7.06	7.3	↔	Hold	6.65
ISPH.CA	IBNSINA PHARMA/d	1.745	1.6	1.4	1.93	2.05	↔	Hold	1.4
AUTO.CA	AUTO GHABBOUR /d	3.11	2.8	2.55	3.16	3.36	↔	Hold	3.16

## Guidelines



**Bullish**



**Bearish**



**Neutral**

Trend: (Upgrade, Downgrade): Change in trend color refers to upgrade or downgrade in the trend relative to the previous trend direction. E.g. change from "↓ Down" to "↔ Flat" is considered an upgrade and vice versa.

**Buy:** Buy the full position.

**P.Buy:** Buy portion of a position

**Hold:** Don't Buy or sell.

**P.SELL:** Sell portion of a position.

**Sell:** Sell the full position.

**Stop Loss:** Completely exit the position (or) Re-entry in cases of Selling.

## Disclaimer

This report has been prepared according to the general data available for public, in accordance with the professional standards applied in that career to the best knowledge of the reporter. The recommendations mentioned are a guiding tool representing a professional opinion, and not granting any profits, consequently it is not obligatory for our valued customers and investors. Pioneers Securities©, Egypt shall not be liable for any direct, indirect, incidental, or consequential damages, including limitation losses, lost revenues, or lost profits that may result from these materials. Republishing this report or any of its contents is subject to prior approval; referring to the source is a must. Opinions expressed are subject to change without notice and may differ or be contrary to the opinions or recommendations of Pioneers Securities©, Egypt Research or the opinions expressed by other business areas or groups of Pioneers Securities©, Egypt as a result of depending solely on the historical technical behavior (price and volume).

## Technical Analysis Department

### **Saleh Nasser**

Chief Technical Strategist

### **Ahmed Hassan**

Senior Technical Analyst

### **Dina Fahmy**

Senior Technical Analyst

### **Tips on reading the report**

The first page includes an analysis of two major indices in the Egyptian Stock Market; the norm is that we will analyze both the EGX 30 and 70, but sometimes we will compare the EGX 30 to its 50 counterpart if there is important information in this comparison. We also use the Hermes Last Index interchangeably with the EGX 30. The .HRMSL index has an important edge; it uses last prices instead of VWAP. First thing our clients should do is to read the indices analysis carefully to have a clear understanding on our overall view.

The second page includes stocks that broke out beyond their resistance levels, and those that violated their support levels. It also includes stocks that are testing their support levels and those that are testing their resistance. This analysis is important and it is the core of our recommendations. It is important to note though that not all stocks that are testing their support levels are bullish, and not all that are testing their resistance levels are bearish. To make it easier for our clients, we have placed a bull face 🐂 if we consider the stock under study bullish, and a bear face 🐻 if we consider it bearish. We also added a big bullet 🍒 if we are neutral.

It is important to note that you might find a stock that we consider bullish in our analysis (in the breakouts/testing section) but it remains as a hold or partial sell in the table. The conflict here is that the table is more conservative. This will not be an issue with our clients, because our analysis will explain why we are being bullish/bearish on the stock.